

2023
GATEWAY TO THE LAND

Secondary School

Star & Gateway Programmes

NZQA Accredited Provider



14th December 2022

National Trade Academy
890 McLeans Island Road Harewood
Christchurch 8051
Phone: 33602192
Email: shortcourse@nta.co.nz
www.nta.co.nz

Our Star & Gateway funded programmes are designed for Year 11 – 13 secondary school students. Students will have the opportunity to achieve credits while exploring vocational pathways.

These programmes align with the tertiary options available at the National Trade Academy as well as the Vocational Primary Industries Pathway.

National Trade Academy will provide all resources, including workbooks and assessments.

Please note that all prices are exclusive of GST unless otherwise stated.



GATEWAY PROGRAMMES

We offer Vocational Pathway packages, tailored to the needs of the student. Due to the seasonal nature of the land-based industries, the programme timetable is decided in consultation with the school, individual student and NTA.

Students can choose from the following programmes:

- **Equine:** Working at our riding school; 'Arion Riding Centre' on-site at McLeans Island. Students will learn to work with and care for horses.
- **Agriculture:** Dairy farming or sheep & beef farming. Students will learn about living and working on a NZ farm, learn basic farming skills, and in the dairy option, learn how to milk cows.
- **Environmental Awareness:** Working from our Training Centre on-site at McLeans Island as well as local farms, and forest areas.

The focus is:

Riparian planting and the impact on the environmental sustainability of our waterways.

Possum Control and their environmental impact.

Wai Fencing – explore how Wai Fencing can protect waterways.

- **Horticulture/Landscaping/Arboriculture:** Working from our Horticulture compound students will learn skills to create a landscaped garden, includes planning, structure and plants, also the use of chainsaws and other equipment associated with the industry.
- **Animal Care:** Working at our farm park; 'Arion Farm Park' on site at McLeans Island. Students will learn how to feed and care for a range of animals.
- **Apiculture:** Working at our Training Centre, where we have our own bee hives, students will learn the nature of working with bees and the opportunities there are to work in the industry.
- **Transport & Logistics:** Focuses on the Commercial Road Transport Industry and also working towards gaining Class 1 Full Driver Licence. NTA is working alongside Pro Active Drive to enable delivery of this programme.

The unit standard information for the above programmes is included in the contents of the booklet.

Gateway programmes are 10 days

Cost to the school per student \$1,000 + GST.

STAR PROGRAMMES

STAR Programmes Details:

Location: 890 McLeans Island Road – NTA Training Centre

Time: 9am – 4pm

Transport: There is a bus service (the Number 3 bus) which runs from Sumner to National Trade Academy, stopping off at Christchurch Bus Interchange (Platform C) and the Antarctic Centre, arriving at NTA at 8:51am. The bus also returns via the same route, departing NTA at 4:07pm. For more information on bus routes, visit the Metro website and look for 'Journey Planner'.

Cost to the school per student

\$550.00 plus GST for a five-day course

\$1,000.00 plus GST for a ten-day course

Distance Learning Programmes

We also offer distance learning programmes, which can be designed to suit the needs of the school.

Theory cost - \$27.85 per credit (plus GST), per student

Practical units are also offered through distance learning. These would incur an additional cost to cover the cost of the assessor.

Contact:

Charlotte Biggins

Star/Gateway Administrator

(03) 360 2192

shortcourse@nta.co.nz

www.nta.co.nz

STAR
INTRODUCTION TO AGRICULTURE
DAIRY FARMING

5 Day Programme
1 Day Per Week
Flexible Start Dates

Unit Standard	Description
18194	Prepare for milking, and milk cows, under close supervision (Level 1, 4 credits)
561	Install, dismantle, and store temporary electric fences (Level 2, 2 credits)
19112	Check and report on livestock (Level 2, 4 credits)

On completion of this course students will be able to under close supervision:

- Prepare for milking.
- Bring a dairy herd in for milking; milk dairy cows; isolate milk unsuitable for collection; and hose down the farm dairy, and yards.
- Install, dismantle, and store temporary electric fences.
- Check and report on livestock

GATEWAY
INTRODUCTION TO AGRICULTURE
DAIRY FARMING

10 day Programme
1 Day Per Week
Flexible Start Dates

Unit Standard	Description
18194	Prepare for milking, and milk cows, under close supervision (Level 1, 4 credits)
561	Install, dismantle, and store temporary electric fences (Level 2, 2 credits)
19112	Check and report on livestock (Level 2, 4 credits)
18193	Describe farm dairy design and the farm dairy effluent system (Level 2, 2 credits)
18192	Demonstrate knowledge of how cows produce milk (Level 2, 2 credits)
24623	Demonstrate knowledge of breeds and classes of cattle, and identification and records for cattle (Level 2, 2 credits)
23542	Identify factors, and describe how to manage factors, that contribute to injury in a rural workplace (Level 3, 4 credits)



On completion of this course students will be able to under close supervision:

- Bring a dairy herd in for milking; milk dairy cows; isolate milk unsuitable for collection; and hose down the farm dairy, and yards.
- Install, dismantle, and store temporary electric fences.
- Identify breeds and classes of cattle and check and report on livestock.
- Identify factors that contribute to injury in the workplace



STAR

INTRODUCTION TO AGRICULTURE **SHEEP / BEEF FARMING**

5 Day Programme
1 Day Per Week
Flexible Start Dates

Choose either beef or sheep units:

Unit Standard	Description
561	Install, dismantle, and store temporary electric fences. (Level 2, 2 credits)
19106	Assist with handling livestock when moving and drafting, and when livestock are distressed (Level 2, 4 credits)

AND

Unit Standard	BEEF FARMING
26417	Assist with handling cattle in yards (Level 2, 2 credits)
24623	Demonstrate knowledge of breeds and classes of cattle, and identification and records for cattle (Level 2, 2 credits)

OR

Unit Standard	SHEEP FARMING
30211	Dag and ring crutch sheep with prepared equipment (Level 2, 5 credits)

On completion of this course students will be able to:

- Assist with livestock, either cattle or sheep, as directed and under supervision.
- Will be able to install, dismantle, and store temporary electric fences.



STAR

Agriculture

Working in a rural workplace

5 Day Programme

1 Day Per Week

Flexible Start Dates

Unit Standards	Description
19115	Handle and move livestock (Level 3, 6 credits)
582	Handle livestock when moving and drafting and when livestock are distressed (Level 3, 6 credits)



GATEWAY

Agriculture

Working in a rural workplace

10 Day Programme

1 Day Per Week

Flexible Start Dates

Unit Standards	Description
19115	Handle and move livestock (Level 3, 6 credits)
27215	Prepare to apply and apply agrichemicals using handheld equipment (Level 2, 5 credits)
23542	Identify factors and describe how to manage factors that contribute injury in a rural workplace (Level 3, 4 credits)
582	Handle livestock when moving and drafting and when livestock are distressed (Level 3, 6 credits)



STAR

Introduction to Horticulture

5 Day Programme

1 Day A Week - Flexible Start Dates

Unit Standards	Description
24557	Demonstrate knowledge of the safe operation of a Quad bike (Level 2, 3 credits)
1	Prepare and sow seeds (Level 1, 5 credits)
27215	Prepare to apply, and apply, agrichemicals using handheld equipment (Level 2, 5 credits)

GATEWAY

Introduction to Horticulture

10 Day Programme

1 Day Per Week or Block Course - Flexible Start Dates

Unit Standards	Description
24557	Demonstrate knowledge of the safe operation of a quad bike (Level 2, 3 credits)
1	Prepare and sow seeds (Level 1, 5 credits)
27215	Prepare to apply, and apply, agrichemicals using handheld equipment (Level 2, 5 credits)
29508	Sow seeds and monitor germination and emergence under close supervision (Level 2, 5 credits)
23781	Grow and pot up plants from stems cuttings (Level 2, 5 credits)



STAR

Level 2 - Project Possum

Possum trapping, fur and pelt recovery, possum biology and environmental impact and workplace safety

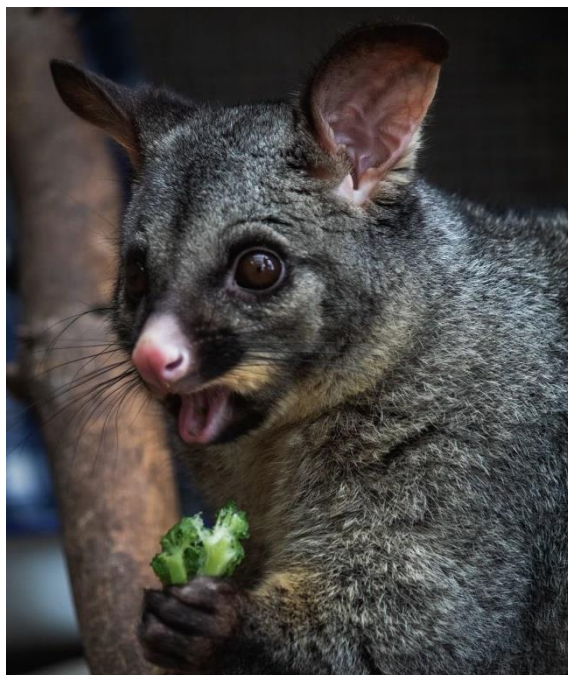
(Dates will be confirmed if we have enough students registering their interest)

Unit Standards	Description
20794	Hand pluck possums for possum fur recovery (Level 2, 2 credits)
20795	Machine pluck possums for possum fur recovery (Level 2, 2 credits)
29335	Demonstrate understanding of rural pest animal operations in New Zealand (Level 3, 8 credits)

This is a 5 day programme and consists of a combination of theory and practical unit standards in the use of traps, toxins, possum control, fur recovery, hand plucking and animal biology for possums and mustelids.

Due to the nature of the programme you will need to register your interest.

(Registration form is attached to this document).



STAR

Level 3 - Project Possum

Skinning possums, possum biology and environmental impact and workplace safety

(Dates will be confirmed if we have enough students registering their interest)

Unit Standards	Description
20793	Skin possums for possum fur recovery (Level 3, 4 credits)
29336	Demonstrate understanding of the purpose and impacts of rural pest animal operations in New Zealand (Level 3, 8 credits)

This is a 5 day programme and consists of a combination of theory and practical unit standards in the use of traps, toxins, possum control, fur recovery, skinning procedures and animal biology for possums and mustelids.

Due to the nature of this programme, you will need to register your interest.

(Registration form is attached to this document).



GATEWAY

Project Possum

Possum trapping, fur and pelt recovery, possum biology and environmental impact and workplace safety

(Dates will be confirmed if we have enough students registering their interest)

Unit Standards	Description
20793	Skin possums for possum fur recovery (Level 3, 4 credits)
20794	Hand pluck possums for possum fur recovery (Level 2, 2 credits)
20795	Machine pluck possums for possum fur recovery (Level 2, 2 credits)
29335	Demonstrate understanding of rural pest animal operations in New Zealand (Level 3, 8 credits)
29336	Demonstrate understanding of the purpose and impacts of rural pest animal operations (Level 3, 3 credits)

This is a 10 day programme and consists of a combination of theory and practical unit standards in the use of traps, toxins, possum control, fur recovery, skinning procedures, hand plucking and animal biology for possums and mustelids.

Due to the nature of this programme, you will need to register your interest
(Registration form is attached to this document).



STAR

Wai Fencing

Fencing stock out and environmental awareness

(dates will be confirmed if we have enough students registering their interest)

(The programme can be arranged to run through the school holidays)

Unit Standards	Description
561	Install, dismantle, and store temporary electric fences. (Level 2, 2 credits)
24832	Open and draw out a coil of wire, tie knots, join wire, and prepare wire for transport and storage (Level 2, 5 credits)
24835	Identify the location of a fault in electric fences, and replace electric fence components (Level 2, 3 credits)

This is a 5-day fencing programme and looks at Wai Restoration and Wai Fencing. Students will participate in practical sessions. In pastoral farming riparian management means fencing out livestock and planting trees along streams to create buffer zones. The programme is aimed at **fencing** stock out and gaining knowledge related to **fencing** and environmental awareness and action.

Due to the nature of the programme you will need to register your interest.

(Registration form is attached to this document)



GATEWAY

Wai Fencing

Fencing stock out and environmental awareness

(dates will be confirmed if we have enough students registering their interest)

(The programme can be arranged to run through the school holidays)

Unit Standards	Description
561	Install, dismantle, and store temporary electric fences. (Level 2, 2 credits)
24832	Open and draw out a coil of wire, tie knots, join wire, and prepare wire for transport and storage (Level 2, 5 credits)
24833	Identify and maintain fencing tools and equipment, and identify fencing construction materials and wire types (Level 2, 3 credits)
24834	Replace a broken post and repair a broken wire in fences (Level 2, 5 credits)
24835	Identify the location of a fault in electric fences, and replace electric fence components (Level 2, 3 credits)
24836	Describe nonelectric fences, fence support materials, and safe practices in fencing (Level 2, 2 credits)

This is a 10-day fencing programme and looks at Wai Restoration and Wai Fencing. Students will participate in practical sessions and investigate career opportunities around riparian management. In pastoral farming riparian management means fencing out livestock and planting trees along streams to create buffer zones. The programme is aimed at **fencing** stock out and gaining knowledge related to fencing and environmental awareness and action.

Due to the nature of the programme you will need to register your interest.

INTRODUCTION TO THE EQUINE INDUSTRY

STAR (Level 2)

(Tuesdays)

5 Day Programme, also running a programme through the school holidays.

Unit Standard	Description
1648	Clean Stables (Level 2, 2 credits)
1656	Groom a horse (Level 2, 2 credits)
29171	Carry out routine, minor, or temporary maintenance of equine facilities under close supervision (Level 2, 5 Credits)

GATEWAY to Equine (Level 2)

(Tuesdays)

10 Day Programme

Flexible start dates depending on student's requirements

Unit Standard	Description
29171	Carry out routine, minor, or temporary maintenance of equine facilities under close supervision (Level 2, 5 credits)
1660	Identify, catch, and prepare a horse for exercise (Level 2, 4 credits).
19945	Lunge a Horse for Exercise (Level 2, 5 credits)
1656	Groom a horse (Level 2, 2 credits)
1648	Clean Stables (Level 2, 2 credits)
6579	Clean and maintain saddlery for horses (Level 2, 2 credits)



GATEWAY to Equine (Level 3)

(Wednesdays) 10 Day Programme

Unit Standard	Descriptions
6622	Analyse horse feed and stable horses (Level 3, 4 credits)
6611	Demonstrate knowledge of the procedure for bringing a horse into work after a spell and letting down (level 3, 4 credits)
6612	Identify plants, grasses, and trees which are potentially poisonous to horses, and describe methods of removal (Level 3, 3 credits)
6617	Assess stable design and construction (Level 3, 3 credits)
1626	Lunge a Horse for Training (Level 3,4 credits)
25979	Demonstrate knowledge of and fit and remove studs on horses' shoes in the sport horse sector (Level 3, 2 credits)

These courses give students a taste of the skills and knowledge necessary for further education and / or employment in the equine industry.

On completion students, will be able to: identify, catch, and restrain the horse; prepare the horse for gearing up; fit gear in preparation for exercise, according to supervisor's or the trainer's instructions; fit protection to the lower leg of the horse; and attend to post exercise activities.

Students will be able to: demonstrate knowledge of paddock maintenance to obtain optimum feeding potential, and provide supplementary feeding when pasture fails to meet horses' requirements; maintain paddock facilities to ensure safety and working efficiency; and manage horses in a paddock.



STAR

Introduction to Apiculture

**5 Day Programme
1 Day A Week
Flexible Start Dates**

Unit Standards	Description
30783	Open and close beehives under close supervision (Level 2, 5 credits)
30791	Demonstrate understanding of honeybee physical features, castes, bee strings and beehive health (Level 2, 5 credits)

Gateway to Apiculture

**10 Day Programme
1 Day Per Week
Flexible Start Dates**

Unit Standards	Description
30782	Feed bees in beehives under close supervision (Level 2, 6 credits)
30783	Open and close beehives under close supervision (Level 2, 5 credits)
30791	Demonstrate understanding of honeybee physical features, castes, bee stings and beehive health (Level 2, 5 credits)
30797	Demonstrate understanding of beekeeping equipment and honey extraction and use equipment for routine operations. (Level 2, 4 credits)

Students will be able to open beehives; feed beehives and carry out beehive inspections; and close beehives. Students will gain understanding of honeybee physical features, castes, bee stings and beehive health as well as bee keeping equipment, honey extraction and use equipment for routine operations.



STAR

Introduction to Animal Care

Flexible start dates for both programmes.

5 Day Programme

Unit Standard	Description
5189	Follow safe working practices and standards in an animal care facility (Level 3, 4 credits)
5152	Monitor health, provide husbandry for, and handle horses (Level 2, 5 credits)

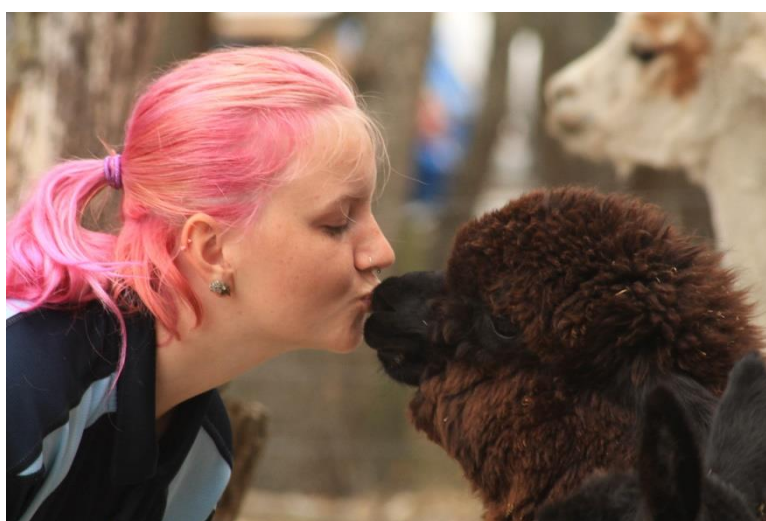
GATEWAY

10 Day Programme

Unit Standard	Description
5189	Follow safe working practices and standards in an animal care facility (Level 3, 4 credits)
5152	Monitor health, provide husbandry for, and handle horses (Level 2, 5 credits)
21360	Monitor health and provide husbandry for poultry (Level 2, 4 credits)
5154	Monitor health and provide husbandry for pigs (Level 2, 4 credits)

This course gives students a taste of the practical units and knowledge required for further education and or work in the animal care and handling industry.

At the end of the course students should be able to: identify rodents, rabbits and poultry; handle safely for routine activities; feed, water and groom; describe indications of health and ill health and describe and maintain housing and equipment.



STAR

Introduction to Chainsaw

2 Day Programme

Flexible Dates

Cost \$400 plus GST per student

Unit Standard	Description
6916	Demonstrate knowledge of the rules relating to chainsaw use. (Level 2, 5 credits)
6917	Demonstrate basic chainsaw operation (Level 2, 12 credits)

People credited with this unit standard are able to:

- Demonstrate knowledge of the rules for chainsaw use; describe rules relating to the transport and use of chainsaw fuel
- Describe PPE and first aid requirements for chainsaw operators as well as operate a chainsaw.



STAR

Agricultural Vehicles

Quad and Motorbike

5 Day Programme

Flexible dates

Unit Standard	Description
19053	Operate a motorcycle on flat terrain in the workplace under close supervision (Level 2, 3 credits)
24555	Demonstrate knowledge of the safe operation of a motorcycle (Level 2, 3 credits)
24557	Demonstrate knowledge of the safe operation of a quad bike (Level 2, 3 credits)
27602	Demonstrate quad bike riding skills on flat ground under close supervision (Level 1, 3 credits)



STAR

Motorcycle

5 Day Programme

Flexible Dates

Unit Standard	Description
24555	Demonstrate knowledge of the safe operation of a motorcycle (Level 2, Credits 3)
19053	Ride a motorcycle on flat terrain (Level 2, Credits 3)
19054	Ride a motorcycle on undulating terrain (Level 3, Credits 4)

Students who participate in this course will on completion be able to demonstrate knowledge for the rules and safe and proper operation and use of a motorcycle.



STAR
Agriculture Vehicles and Machinery
Quad Bike (Advanced)

5 Day Programme

Age 16 plus

Please register your interest.

(dates will be confirmed if we have enough students registering their interest)

Unit Standard	Description
24554	Ride a quad bike on flat terrain in the workplace (Level 2, Credits 4)
24559	Ride a quad bike on hilly terrain (Level 3, Credits 4)
24561	Ride a quad bike with trailed equipment (Level 3, Credits 4)
24563	Ride a quad bike with mounted equipment or a load (Level 3, Credits 3)

Unit standard 24557 Demonstrate knowledge of the safe operation of a quad bike is a prerequisite to the above units.

To complete unit 24554 students must have evidence of a minimum of 20 hours riding a quad bike, in a workplace situation, covering a range of tasks, over at least a 3-week period. Examples of evidence – a logbook, a workplace diary, or attestation from employer or similar

Unit 24554 is a prerequisite to units 24559, 24561, 24563.

Unit 24559 only suitable for students who come from a farming background and using quad bikes regularly on the farm (Registration form is attached to this document)



STAR

Agriculture Vehicles and Machinery

Tractor

3 Day Programme (weekly)

Please acknowledge interest

(dates will be confirmed if we have enough students registering their interest)

Unit Standard	Description
19044	Describe the legal requirements and occupational hazards associated with tractor use (Level 2, Credits 3)
27608	Drive a basic wheel tractor on flat terrain under close supervision (Level 1, Credits 3)
31913	Operate a basic tractor on flat terrain under close supervision (Level 2, Credits 3)

Unit standard 19044 Describe the legal requirements and occupational hazards associated with tractor use is a **prerequisite** to unit 31913.

Unit 31913 - Only suitable for students with farming backgrounds or access to farms.

To complete unit 31913 students must have evidence of a minimum of 10 hours driving a tractor in a workplace situation, over a 3-week period, covering a range of tasks. This evidence could consist of either a driving logbook, a workplace diary, an attestation from the candidate's employer or similar.

(Registration form is attached to this document)



NEW PROGRAMME

STAR/GATEWAY

Introduction to Transport/Logistics Industry



**PROactive
DRIVE**
Driver Education

STAR

5 Day Programme (Flexible start dates)

**Please acknowledge interest
(dates will be confirmed if we have enough students registering their interest)**

Unit Standard	Description
15408	Demonstrate knowledge of motor vehicle documentation and primary systems of a vehicle (Level 2, Credits 4)
17676	Carry out a pre-start vehicle check on a vehicle or machine, and start and shut down the vehicle or machine (Level 2, Credits 3)
20969	Demonstrate procedures when a light vehicle has broken down (Level 1, Credits 2)

Elective strands to Choose From

Unit Standard	Description
29363	Learn to drive a vehicle within the conditions of a Class 1 New Zealand Learner driver licence (Level 2, Credits 1)
29364	Drive a vehicle within the conditions of a Class 1 New Zealand Restricted driver licence (Level 2, Credits 4)
29365	Drive a vehicle within the conditions of a Class 1 New Zealand Full driver licence (Level 2, Credits 2)

Learner Licence Programme includes driving assessment – One Full hour session

Restricted and Full Licence Programme includes Free Group Lesson up to 3 people for 2 hours. Must have Learner or Restricted Licence

Learner and Restricted Driver licence costs included in the programme

GATEWAY

Introduction to the Transport/Logistics Industry

10 Day Programme (Flexible start dates/delivery)

Please acknowledge interest.

(dates will be confirmed if we have enough students registering their interest)

Unit Standard	Description
1735	Demonstrate knowledge of the commercial road transport industry (Level 2, credits 3)
3469	Apply control in driving a light motor vehicle (Level 2, Credits 2)
3465	Describe driving hazards and crash risk reduction strategies and responses to driving hazards (Level 2, Credits 3)
21869	Remove and replace road wheels on a vehicle . (Level 2, Credits 1)

Elective strands to Choose From

Unit Standard	Description
Level 2	Choose up to 14 credits from below
	Either 29363, 29364. 29365
29363	Learn to drive a vehicle within the conditions of a Class 1 New Zealand Learner driver licence (Level 2, Credits 1)
29364	Drive a vehicle within the conditions of a Class 1 New Zealand Restricted driver licence (Level 2, Credits 4)
29365	Drive a vehicle within the conditions of a Class 1 New Zealand Full driver licence (Level 2, Credits 2)
	Make up the difference from the unit standards below
3471	Tow a light simple trailer (Level 2, credit 1)
13230	Demonstrate knowledge of the advantages and disadvantages of freighting goods in different transport industry sectors (Level 2, credit 2)
Level 3	
17678	Drive a light vehicle on unsealed road surfaces (Level 3, credit 3)
3466	Apply risk reduction techniques and strategies while driving (Level 3, credit 4)
13237	Demonstrate knowledge of New Zealand and global trade patterns (Level 3, credit 3)
27305	Demonstrate knowledge of dangerous goods as a freight forwarder (Level 3, credit 3)

Learner Licence Programme includes driving assessment – One Full hour session

Restricted and Full Licence Programme includes Free Group Lesson up to 3 people for 2 hours. Must have Learner or Restricted Licence

Learner and Restricted Driver licence costs included in the programme

Registration of interest

Programme option:

- | | |
|--|--------------------------|
| Project Possum | <input type="checkbox"/> |
| Tractor | <input type="checkbox"/> |
| Quad Bike (Advanced) | <input type="checkbox"/> |
| Wai Fencing | <input type="checkbox"/> |
| Introduction to the Transport/Logistics Industry STAR | <input type="checkbox"/> |
| Introduction to the Transport/Logistics Industry GATEWAY | <input type="checkbox"/> |

School: _____

Gateway Co-Ordinator: _____

Contact details:

Email address: _____

Phone: _____

Student Names and year level:

Please register interest to:

Star/Gateway Administrator

Email: shortcourse@nta.co.nz

Once registration of interest has been received, confirmed programme dates will be sent out for confirmation of enrolment.

National Trade Academy
STAR/Gateway 2023
Student Application to Enrol Form



P O Box 39069
Harewood
Christchurch 8545

Phone 03 360 2192
Email: shortcourse@nta.co.nz

INSTRUCTIONS

The purpose of this application form is to obtain from you the information we need to enrol you into the Land Based Trades Academy course at the National Trade Academy Ltd and for Ministry of Education statistics. Please fill in the form properly by:

- Completing all sections of the form.
- Printing your answers clearly in **pen**, or by ticking the box that applies for multi-choice questions.
- Signing the form.

A COURSE					
Please write the name of the course you wish to enrol in:					
10 days <input type="checkbox"/>			5 days <input type="checkbox"/>		
Course Start Date				Course End Date	
B PERSONAL DETAILS					
1	Print your full legal surname:				
	Given first name(s)				
2	Preferred first name:				
3	Secondary School:				<u>SCHOOL YEAR</u>
					Year:
	Contact phone number:				
	Email:				
	Postal Address:				
4	Date of birth:	<input type="text"/> <input type="text"/> <input type="text"/> <input type="text"/> <input type="text"/> <input type="text"/> <input type="text"/> <input type="text"/> day month year	5	Gender:	Male <input type="checkbox"/>
		Female <input type="checkbox"/>			
6	Citizenship	NZ Citizen <input type="checkbox"/>	NZ Permanent Resident <input type="checkbox"/>	Australian Citizen or Permanent Resident <input type="checkbox"/>	Other <input type="checkbox"/>
		If other, write down your country of citizenship			

	(For students with dual citizenship specify the country of citizenship of the passport used to enter New Zealand,)				
7	Ethnicity	NZ Maori <input type="checkbox"/>	Pakeha <input type="checkbox"/>	Pasifika <input type="checkbox"/>	Other <input type="checkbox"/>
9	If you know your NSN (National Student number), please write it here:	<input type="text"/> <input type="text"/> <input type="text"/> - <input type="text"/> <input type="text"/> <input type="text"/> - <input type="text"/> <input type="text"/> <input type="text"/> <input type="text"/>			
MEDICAL CONDITIONS & DISABILITIES	The following information is confidential. Disclosure of information will not influence your acceptance on the programme.				
	Do you live with any of the following? Yes <input type="checkbox"/> No <input type="checkbox"/>				
	If yes, please indicate your condition/disability by ticking one or more of the boxes below:				
	Hearing impairment	<input type="checkbox"/>	Hand function/OOS	<input type="checkbox"/>	
	Visual impairment	<input type="checkbox"/>	Mental Health difficulties	<input type="checkbox"/>	
	Mobility impairment	<input type="checkbox"/>	Chronic Medical conditions	Please specify	<input type="text"/>
	Specific learning difficulty	<input type="checkbox"/>	Other	Please specify	<input type="text"/>
	Allergies/allergic Reactions	<input type="checkbox"/>	Please specify	<input type="text"/>	
	IN CASE OF EMERGENCY				
	Emergency Alternative Contact				
Name:		<input type="text"/>			
Address:		<input type="text"/>			
Phone:		<input type="text"/>	Relationship:	<input type="text"/>	
Doctors Contact Details					
Name:		<input type="text"/>			
Medical Centre:		<input type="text"/>			
Phone:		<input type="text"/>			

D DECLARATION

Privacy – The NTA Land Based Trades Academy collects and stores information from this form to comply with the requirements of the [Education and Training Act 2020](#), and its obligations under other enactments and in accordance with the [Privacy Act 2020](#).

The information is also used to select students for qualifications, to manage internal administrative processes, and for internal reporting. Information about students may be supplied to, and sought from, other educational institutions for the purpose of verifying academic records.

NB: The Privacy Act 2020 has the stated aim of protecting the privacy of individuals. It also governs the collection, use, storage and disclosure of personal information. The Privacy Act requires National Trade Academy to collect, hold, handle, use and disclose personal information in accordance with the twelve information privacy principles in the Act.

<https://www.legislation.govt.nz/act/public/2020/0031/latest/LMS23223.html>

Rules – In signing this application form you undertake to comply with the published rules and policies of the Academy with regard to attendance, academic progress, standard of dress, health and safety, and behaviour.

Declaration – *I declare that to the best of my knowledge all the information supplied on, and with, this application form is true and complete, I agree to abide by the conditions described above, and I consent to the disclosure of personal information as described above and information about assessments, attendance and progress to the contributing school, and to Whanau/Parents/Caregivers.*

Signature

____/____/____
Date

To be signed by parent or legal guardian if prospective student is **under the age of 16 years** at the time of enrolment.

Signature

____/____/____
Date

Signature of NTA representative.

Signature

____/____/____
Date