



## Programmes for Schools

The Land Based Trade Academy is a partnership between contributing secondary schools, their students, and NTA.

The programmes are practical based with some theory.

Students learn industry-based skills, as a step into further study or employment.

Students will work towards achieving NCEA Level 1, 2 and 3

## 2026 DUAL ENROLMENT TRADE ACADEMY PROGRAMMES

- Apiculture (Bee keeping)
  - Agriculture
  - Animal Care
  - Equine
  - Horticulture
  - Transport, Logistics & Warehousing
  - Welding & Light Engineering
- 
- Automotive Studies     - *Avon City Ford*
  - Psychology                 - *Vision College*



## LAND BASED TRADES ACADEMY

### PROGRAMME LIST:

<b>NTA Level 2 programmes</b>	<b>Credits</b>	<b>Dates</b>	<b>Page</b>
Apiculture (Bee Keeping)	40+ credits	12/02/26 - 12/11/26	5-6
Agriculture - NZ Certificate in Primary Industry Skills	40+ credits	12/02/26 - 12/11/26	7-9
Animal Care - Vocational Pathway	40+ credits	12/02/26 - 12/11/26	10-11
Equine - NZ Certificate in Equine Skills	40+ credits	12/02/26 - 12/11/26	14-15
Horticulture - NZ Certificate in Primary Industry Skills	40+ credits	12/02/26 - 12/11/26	17-18
Transport, Logistics & Warehousing programme	40+ credits	12/02/26 - 12/11/26	20-21
Welding and Light Engineering Fabrication	40+ credits	12/02/26 - 12/11/26	22-23
<b>NTA Level 3 programmes</b>	<b>Credits</b>	<b>Dates</b>	<b>Page</b>
Animal Care - NZ Certificate in Animal Care	40+ credits	12/02/26 - 12/11/26	12-13
Equine - NZ Certificate - Sporthorse Stable Assistant Strand	40+ credits	12/02/26 - 12/11/26	16
Horticulture	40+ credits	12/02/26 - 12/11/26	19
<b>Partner providers - Mixed levels</b>	<b>Credits</b>		<b>Page</b>
Automotive Programme	40+ credits		24-25
Psychology	15 credits		26-27
<b>Bus information</b>			28

# LAND BASED TRADES ACADEMY

## BACKGROUND INFORMATION

The National Trade Academy has been providing land-based training since 2000.

Located on a 70-hectare Training Centre at McLeans Island on the outskirts of Christchurch, NTA is committed to meeting the education and training needs of our students and has expanded into other sectors to offer diverse training opportunities. Essential to this is the provision of a safe supportive learning environment both in the classroom and in the practical environment.

### Funding

Dual Enrolment Trade Academy programmes are funded by the Ministry of Education and are free to all secondary school students.

### NTA provides:

- All teaching resources, transport and equipment required to deliver the programme
- Transport costs for each student eg metro card or fuel payments
- Clothing - each student receives a polo shirt and work boots (or riding boots & riding helmet for Equine)

Our Level 2 programmes are aimed at those students that are working towards NCEA Level 1 & 2.

Our Level 3 programmes are aimed at Year 12 and 13 students who may have achieved NCEA Level 2 and are looking at relevant next steps into employment or further education. The students would benefit from enrolment in a primary industry-focused qualification as a pathway to further study in the industry or employment.

If you are interested in enrolling in a Trades Academy Programme, talk to your secondary school contact or contact National Trade Academy or any one of our partners:



Ph: 03 3602192  
Email: [marketing@nta.co.nz](mailto:marketing@nta.co.nz)  
Address: 890 McLeans Island Road,  
Christchurch

### Avon City Training Services



Phil Hayes  
Ph: 03 2661549  
Email: [phayes@acford.co.nz](mailto:phayes@acford.co.nz)  
Address: 162 Main South Road,  
Sockburn, Christchurch



Ph: 03 3778878  
Email: [hello@visioncollege.co.nz](mailto:hello@visioncollege.co.nz)  
Address: 20 Twigger Street, Addington,  
Christchurch

## LAND BASED TRADES ACADEMY





---

# APICULTURE



## Apiculture / Bee Keeping Level 2

**Duration:** Part time - One to two years  
**Days:** Thursday and Friday  
**Time:** 9am – 4pm  
**Credits:** 40+ Credits  
**Literacy & Numeracy assistance available if required**



### PROGRAMME OUTLINE

The purpose of this programme is to provide the apiculture industry with people with a basic set of skills and the underpinning knowledge of keeping hives in an apiary. Successful learners will be able to work confidently around bees in an apiary and complete a range of seasonal tasks required to keep the hives healthy and produce a honey crop. In addition, beehive construction and equipment used to manipulate the hives, manage hive health, and extract honey is all covered in the programme.

ID		NZQF Credits
Unit Standard	Title	Level 2
31656	Demonstrate knowledge of safe work practices in a primary industry operation	10
30797	Demonstrate understanding of beekeeping equipment and honey extraction, and use equipment for routine operations	4
30782	Feed bees in beehives under close supervision	6
30794	Demonstrate understanding of managing bee behaviour, and assist with beehive manipulations, under close supervision	7
30783	Open and close beehives under close supervision	5
30796	Demonstrate understanding of the process, role and significance of plant pollination by bees	3
30791	Demonstrate understanding of honey bee physical features, castes, bee stings and beehive health	5
<b>Total credits</b>		<b>40</b>

### Why Study Apiculture/Bee Keeping?

Beekeeping allows you to observe the fascinating behaviour of bees and understand their critical role in the ecosystem. Apiculture supports sustainability by strengthening pollinator populations and encouraging eco-friendly land practices.

Beyond environmental impact, beekeeping contributes directly to food security by supporting pollination - essential for healthy crops and plant diversity. It's also educational, enhancing your understanding of biology, ecology, and the interconnectedness of life. Many find beekeeping to be a therapeutic, fulfilling hobby.

Apiculture offers career potential as the demand for honey and other bee products continues to rise. This growing industry is in need of skilled beekeepers, opening up job opportunities in commercial and independent operations. Whether working as a beekeeper, assistant, or starting your own apiary, the field is full of options.

Beekeeping also equips you with valuable, hands-on skills, including hive management, disease prevention, honey extraction, and even basic woodworking to build and maintain hives. Beekeeping can also serve as a source of side income through the sale of honey and other bee products.

Beyond honey, bees produce wax, royal jelly, propolis, and even venom—all of which have commercial, nutritional, and medicinal applications. These products can support both personal use and financial gain.

**Sting Awareness & Safety** - NTA provides full protective gear for when handling bees. Despite common fears, bees are generally docile and sting only when they feel threatened. With proper handling, calm behaviour, and the use of protective gear, the risk of getting stung is low.

**What else will I learn?** - Hive management, disease control, honey production, and even woodworking.

---

# AGRICULTURE LEVEL 2



## **STUDENT TESTIMONIAL**

"I have loved meeting new people and learning new tasks that I would never have learned if I didn't enrol at NTA."

# New Zealand Certificate in Primary Industry skills (Agriculture) Level 2

QUALIFICATION NZ2218

**Duration:** Part time - One to two years  
**Days:** Thursday and Friday  
**Time:** 9am – 4pm  
**Credits:** 40+ Credits  
**Literacy & Numeracy assistance available if required**



## PROGRAMME OUTLINE

The aim of this programme is to provide a sound basis for further education and training for students who are interested in a career in agriculture. The programme is designed to enable students to experience a range of farming activities they are interested in, e.g., farm skills, livestock handling, fencing, agrichemicals, vehicle, and machinery operation.

The Mandatory Safe Work Practice strand (19 Credits) precedes the elective strands:

Sheep Strand (14 Credits) or the

Cattle Strand (11 Credits).

The balance of credits to complete a total of 40 is made up by selecting units from the Practical Task Electives.

Programme duration dependent on student's ability, as well as literacy, and numeracy requirements.

NZ2218		NZQF Credits	
Unit Standard	Title	Level 2	Level 3
<b>Mandatory</b>	<b>Safe Work Practice Unit Standards Below</b>		
31656	Demonstrate knowledge of safe work practices in a primary industry operation	10	
19044	Demonstrate knowledge of the legal requirements and hazards associated with tractor use	3	
19053	Operate a motorcycle on flat terrain in the workplace under close supervision	3	
24555	Demonstrate knowledge of the safe operation of a motorcycle	3	
<b>Total Credits</b>		<b>19</b>	
<b>Substitute</b>	<b>Safe Work Practice Unit Standards if required</b>		
24554 (for 19053)	Operate a quad bike on flat terrain in the workplace under close supervision	4	
24557 (for 24555)	Demonstrate knowledge of the safe operation of a quad bike	3	
<b>Total Credits</b>		<b>7</b>	

continued on next page





**NZ2218 Elective Strands to choose from:**

<b>NZ2218</b>		<b>NZQF Credits</b>	
Unit Standard	Title	Level 2	Level 3
<b>Sheep Strand</b>			
30211	Dag and ring crutch sheep with prepared equipment	5	
19146	Carry out wool shed tasks during shearing operations	5	
19147	Describe the activities and identify the hazards in a wool shed during shearing from a farm perspective	2	
24641	Demonstrate knowledge of features, attributes, identification, and records for sheep	2	
<b>Total Credits</b>		<b>14</b>	

<b>Cattle Strand</b>			
10082	Demonstrate knowledge of rearing weaner or replacement cattle		4
24623	Demonstrate knowledge of breeds and classes of cattle, and identification and records for cattle	2	
26417	Assist with handling cattle in yards	2	
24835	Identify the location of a fault in electric fences, and replace electric fence components	3	
<b>Total Credits</b>		<b>11</b>	

<b>Practical Tasks</b>	<b>Elective Unit Standards below to complete a balance of 40 Credits</b>		
27213	Identify and interpret agrichemical product information, and describe safety procedures when working with agrichemicals	5	
21556	Control weeds under supervision	2	
24833	Identify and maintain fencing tools and equipment, and identify fencing construction materials and wire types	3	
24832	Open and draw out a coil of wire, tie knots, join wire, and prepare wire for transport and storage	5	
19112	Check and report on livestock	4	
24630	Assist with livestock grazing management, and feed livestock under direct supervision	4	
19106	Assist with handling livestock when moving and drafting, and when livestock are distressed	4	
<b>Total Credits</b>		<b>27</b>	

**Elective Unit Standards above to complete a balance of 40 Credits**

---

## **ANIMAL CARE LEVELS 2&3**



### **STUDENT TESTIMONIAL**

"I love having the interaction with all the different animals at the farm park. There is sometimes a dog in the class to have cuddles with too, which is a bonus! I also love the fact that we get hands-on experience at the farm park."

## Vocational Pathway in Animal Care Level 2

**Duration:** Part time - One to two years  
**Days:** Thursday and Friday  
**Time:** 9am – 4pm  
**Credits:** 40+ Credits  
**Literacy & Numeracy assistance available if required**



### PROGRAMME OUTLINE

The Animal Care Level 2 programme is a mixture of theory and practical elements involving hands-on work at our on-site farm park.

Practical units are normally taught at the beginning and end of each year with the theory only topics in the middle of the year when the weather is wetter and colder.

The programme covers a range of animals including rabbits, guinea pigs and dogs, to poultry, sheep, cattle and many more. The course will give students an introduction to the animal care industry and allow them to progress onto the Animal Care Level 3 programme.

Programme duration dependent on individual ability and literacy and numeracy requirements.

ANIMAL CARE UNIT STANDARD		NZQF Credits	
Unit Standard	Title	Level 2	Level 3
12383	Explore career options and their implications	3	
19112	Check and report on livestock	4	
19152	Assist with the preparation and handling of lambs for docking	2	
20797	Describe farm practices and farm animal behaviour	3	
21382	Demonstrate knowledge of health and behaviour, and provide husbandry for ornamental fish	2	
5152	Monitor health, provide husbandry for, and handle horses	5	
1648	Clean a stable	4	
1656	Groom a horse	3	
19116	Demonstrate knowledge of livestock behaviour and welfare in a primary industry operation	3	
24623	Describe breeds and classes of cattle, and identification and records for cattle	2	
24641	Describe the features, attributes, identification, and records for sheep	2	
5151	Monitor health, provide husbandry for, handle, and transport caged birds	3	
7337	Identify, handle, transport, and care for dogs		4
5148	Identify, handle, transport, and care for cats		4
Total credits (Level 2 and 3 combined)		44	

# New Zealand Certificate in Animal Care Level 3

QUALIFICATION NZ2487

**Duration:** Part time - One-two years  
**Days:** Thursday and Friday  
**Time:** 9am – 4pm  
**Credits:** 40+ credits  
**Literacy & Numeracy assistance available  
if required**



## PROGRAMME OUTLINE

The New Zealand Certificate in Animal Care Level 3 is an exciting Animal Care programme which covers a variety of practical and theory.

We are lucky to have the Arion Farm Park on site, of which we can utilize for our Animal Husbandry skills.

The course covers companion animals and legislative units within the animal care field, from dogs to animal welfare.

Students who complete this certificate have gone on to work in pet shops, catteries, kennels, and vet clinics.

After completing this qualification there is the option of further studies, including:

- Diploma in Veterinary Nursing or New Zealand Certificate in Rural Animal Technology.
- New Zealand Certificate in Animal Management (Level 4) with strands in Canine Behaviour and Training Captive Wild Animals and Companion Animals.
- New Zealand Certificate in Animal Healthcare Assisting (Level 4) Rural Animal Strand

Students will gain credits towards the New Zealand Certificate in Animal Care Level 3 over one to two years, depending on individual ability.

(Unit standards are on next page)



Level 3 continued on next page



# New Zealand Certificate in Animal Care Level 3

QUALIFICATION NZ2487

**Duration:** Part time - One to two years  
**Days:** Thursday and Friday  
**Time:** 9am – 4pm  
**Credits:** 40+ credits  
**Literacy & Numeracy assistance available if required**



New Zealand Certificate in Animal Care level 3		NZQF Credits	
Unit Standard	Title	Level 2	Level 3
Health and Safety, Interpersonal Relationships and Ethical Animal Behaviour			
5189	Apply health and safety and hazard control when working in an animal facility		4
The Animal Welfare Act 1999 and Animal Facility Hygienic Practices			
21380	Describe animal facility environmental hygiene and carry out hygienic practices		5
31504	Describe and apply the Animal Welfare Act 1999 to a work role in an animal facility		3
Companion Animal Health and Behaviour, and Emergency Care			
31500	Describe emergency care of injured animal patients		5
31503	Carry out companion animal examination, and record and report variations to normal health and behaviour		4
Companion Animal Anatomy, and Zoonoses			
5180	Describe companion animal anatomy, cells, body tissues and systems		6
19894	Describe zoonoses, notifiable exotic zoonoses, and their control, in New Zealand		5

Unit Standard	Title	Level 2	Level 3
Care for Dogs			
7337	Identify, handle, transport, and care for dogs		4
31502	Describe dog feeding, health, and housing, and carry out routine health procedures		5
Care for Cats			
5148	Identify, handle, transport, and care for cats		4
31501	Describe cat feeding, health, and housing, and carry out routine health procedures		5
Care for Caged Birds			
5151	Monitor health, provide husbandry for, handle, and transport caged birds	3	
32801	Describe bird feeding, health, housing, and routine health procedures		3
Care for Rabbits and Rodents			
32804	Monitor health, provide husbandry for, handle, and transport rodents		3
32805	Monitor health, provide husbandry, handle, and transport rabbits		3

---

# EQUINE

## LEVELS 2&3



### STUDENT TESTIMONIAL

“The tutor is really supportive and knowledgeable. This makes the course really fun, and the classroom/stable yards are a positive environment to be in. There is a good balance between theory and practical and you’re able to apply the theory work to real-life situation.”

# New Zealand Certificate in Equine Level 2

QUALIFICATION NZ2375

**Duration:** Part time - One - Two Years  
**Days:** Thursday and Friday  
**Time:** 9am – 4pm  
**Credits:** 40+ Credits  
**Literacy & Numeracy assistance available if required**



## PROGRAMME OUTLINE

The purpose of this programme is to provide individuals with the skills and knowledge to enable them to seek employment as stable hands or stud assistants in a sector of the equine industry.

Course duration dependent on individual ability and literacy and numeracy requirements.

EQUINE UNIT STANDARD		NZQF Credits	
Unit Standard	Title	Level 2	Level 3+
23973	Perform safe work practices with an outside contractor in an equine industry	3	
29165	Apply skills for employment in an equine industry workplace	5	
29168	Care for a group of horses in a paddock, maintain paddocks, and install and dismantle temporary electric fences	10	
6623	Demonstrate horse clipping technique	3	
14594	Identify the external anatomy, and identify and report signs of good health, ill health and emergencies involving horses	4	
29171	Carry out routine, minor, or temporary maintenance of equine facilities	5	
1648	Clean a stable	4	
6579	Clean and maintain saddlery for horses	2	
29167	Prepare horses for travel, and load and unload	4	
1660	Identify, catch, and prepare a horse for exercise	5	
19945	Lunge a horse for exercise	5	
	Total	50	



# New Zealand Certificate Equine Level 3 Sporthorse Stable Assistant Strand

QUALIFICATION NZ2376

**Duration:** Part time - One to two years  
**Days:** Thursday and Friday  
**Time:** 9am – 4pm  
**Credits:** 40+ Credits  
**Literacy & Numeracy assistance available if required**



## PROGRAMME OUTLINE

The purpose of this qualification is to provide the equine industry with individuals who have the skills and knowledge to assist in the stabling, care, and/or exercise of horses in the performance horse sectors of the equine industry.

EQUINE UNIT STANDARD		NZQF Credits	
Unit Standard	Title	Level 2	Level 3+
29173	Communicate with team members and stakeholders, and comply with employment contract obligations in an equine workplace		5
29172	Demonstrate knowledge of horse feeds, nutritional and feed requirements and problems, and feed horses in training		5
29174	Provide routine care to horses in training		5
6580	Demonstrate knowledge of hazards, routine health care, emergency responses, and ongoing care of horses		4
1626	Describe the benefits of lunging and lunge a horse for training		4
1660	Identify, catch, and prepare a horse for exercise	5	
25443	Demonstrate knowledge of the gear and procedures used in the exercise of horses		6
1623	Prepare a horse for show	3	
1650	Prepare a horse for travel by road, and load and unload		3
	Total per level	8	32
<b>Total Credits</b>		<b>40</b>	

Module	Identify, report, and treat problems of horses in training (Level 3)
Module	Exercise horses in training for a sport horse discipline (Level 3)

OPTIONAL EQUINE UNIT STANDARDS		NZQF Credits	
Unit Standard	Title	Level 2	Level 3+
6582	Ride a horse in a balanced position at walk, trot, and canter on the flat and over undulating country		4
6613	Demonstrate knowledge of the structure of the horse's foot, the horse shoeing process and remedial shoeing		5
	Total Credits	<b>8</b>	



---

# HORTICULTURE

## LEVELS 2&3



### STUDENT TESTIMONIAL

"It was a good course. Well taught, learnt heaps, a good mix between book work and practical work, fun and a genuinely positive place to be."

# Horticulture Level 2

QUALIFICATION NZ2218

**Duration:** Part time - One to two years  
**Days:** Thursday and Friday  
**Time:** 9am – 4pm  
**Credits:** 40+ Credits  
**Literacy & Numeracy assistance available if required**



## PROGRAMME OUTLINE

The focus of this programme is on safe work practices in a horticulture environment and skills relevant to working in various sectors of the horticulture industry. Skills such as plant identification, propagation, handling agrichemicals, maintaining property structures, servicing small engines, and planting shrubs and trees in a landscaping environment.

Programme duration dependent on individual ability and literacy and numeracy requirements.

Pathways:

New Zealand Certificate in Horticulture General (Level 3) (Ref. 2677)

New Zealand Certificate in Horticulture (Level 3) with strands in Nursery Production (Ref: 2678)

Horticulture Unit Standard		NZQF Credits
Unit Standard	Title	Level 2
31656	Demonstrate knowledge of safe work practices in a primary industry operation	10
29492	Care for a nursery crop	5
21556	Control weeds under supervision	2
29669	Use small machinery to carry out a range of routine horticulture tasks	5
21027	Plant and maintain displays of bedding plants	10
29663	Care for trees and shrubs	5
29508	Sow seeds and monitor germination and emergence	5
Total Credits		42



## General Horticulture Level 3

**Duration:** Part time - One to two years  
**Days:** Thursday and Friday  
**Time:** 9am – 4pm  
**Credits:** 40+ Credits  
**Literacy & Numeracy assistance available if required**



### PROGRAMME OUTLINE

This programme covers a range of skills and knowledge which would be useful when seeking entry level employment in the horticulture industry.

Pathways: New Zealand Certificate in Horticulture Level 4.

		NZQF Credits
Unit Standard	Title	Level 3
29838	Plant and care for plants	5
20560	Grow nursery crops in containers	10
29843	Select and prepare cutting material, and harden off rooted cuttings	10
31074	Select and plant plants, and apply mulches, in landscape work	3
12395	Demonstrate knowledge of a horticultural irrigation system	5
29823	Carry out canopy maintenance of trees or vines	5
22175	Describe soil properties and their effect on plant growth	6
Total Credits		44





# Transport, Logistics & Warehousing Level 2



## STUDENT TESTIMONIAL

"I came to learn how to drive a car, bonus I can change the wheels and I've learnt all about the things inside the car and under the hood."



# Transport, Logistics & Warehousing programme Level 2

**Duration:** Part time - One to two Years  
**Days:** Thursday and Friday  
**Time:** 9am – 4pm  
**Credits:** 40 credits  
**Literacy & Numeracy assistance available if required**



## PROGRAMME OUTLINE

This programme has been designed to introduce students to a range of transport, logistics and warehousing career opportunities and prepare you for the demands that the industry requires in your career choice. The programme content covers a range of theory knowledge and practical skills that will help you moving forward. Whilst due to age restrictions, truck driving itself will be out of reach straight away, there are many other career opportunities in the industry which can be accessed prior to obtaining a class 2 or class 4 licence.

Unit Standard	Description	Level 2	Level 3
1735	Demonstrate knowledge of the commercial road transport industry	3	
15408	Demonstrate knowledge of motor vehicle documentation, describe the primary systems of a motor vehicle	4	
17676	Carry out a pre-start vehicle check on a vehicle or machine, & start & shut down the vehicle or machine	3	
21869	Remove and replace road wheels on a vehicle	1	
17593	Apply safe work practices in the workplace	4	
19044	Demonstrate knowledge of legal requirements & hazards associated with tractor use	3	
31913	Operate a basic tractor on flat terrain under close supervision	3	
31914	Attach & detach a power take off driven 3-point linkage mounted implement to a basic tractor under close supervision	2	
24555	Demonstrate knowledge of the safe operation of a motorcycle	3	
19053	Operate a motorcycle on flat terrain in the workplace under close supervision	3	
19046	Service, repair and maintain primary industry machinery		6
29836	Pack and dispatch pre-graded nursery plant products and complete documentation		5
<b>Total</b>		<b>40</b>	

Part of this programme is introducing students to industry workplaces. There will be regular trips to logistics companies, engineering firms and devanning operations.

---

# Welding Programme





## PROGRAMME OUTLINE

This is a programme for Year 12/13 students and consists of unit standards from the Engineering Industries. The course will work towards the students gaining experience and knowledge using engineering hand tools, power tools, workshop machines and welders. It will also focus on performing engineering maintenance tasks, servicing, and maintaining small engines.

This programme will give students practical knowledge and experience using many different types of tools and equipment. It is approximately 50% theory and 50% practical to keep students engaged and reinforce their knowledge.

As this programme involves using power tools and industry equipment, a strong focus on health and safety will be enforced and must be followed by students at all times.

Programme duration dependent on individual ability and literacy and numeracy requirements.

Welding and Light Engineering Fabrication		NZQF Credits	
Unit Standard	Title	Level 2	Level 3
<b>Welding / Engineering</b>			
21911	Demonstrate knowledge of safety on engineering worksites	2	
33135	Demonstrate knowledge of safety and health while welding and thermal cutting		3
29730	Apply good work practices when performing basic fabrication operations under supervision	6	
2396	Demonstrate and apply knowledge of the selection, use and care of portable handheld engineering power tools	4	
2395	Demonstrate and apply knowledge of the selection, use, and care of engineering hand tools	4	
2672	Weld steel to a general purpose industry standard using the gas metal arc welding process		6
21684	Use a MIG welding plant in the automotive industry		3
29560	Demonstrate knowledge of efficient and effective workplace procedures in mechanical engineering	3	
<b>Engines and Servicing</b>			
19047	Demonst the working principles, maintenance, and servicing of petrol and diesel engines	2	
4	Maintain hand tools and service small engines used in a primary industry operation	5	
6917	Demonstrate basic chainsaw operation	12	
<b>Total credits</b>		<b>50</b>	

---

## **AUTOMOTIVE PROGRAMME**



**Avon City Training Services**

---





## Certificate in Automotive Practices (Level 3)

### PROGRAMME OUTLINE

This training programme has been designed to introduce students to a range of automotive career opportunities and prepare you for the demands that the industry requires in your career choice.

The programme content covers a range of theory knowledge and practical skills that you need to achieve at a high level, as well as preparing you for work in your chosen career.

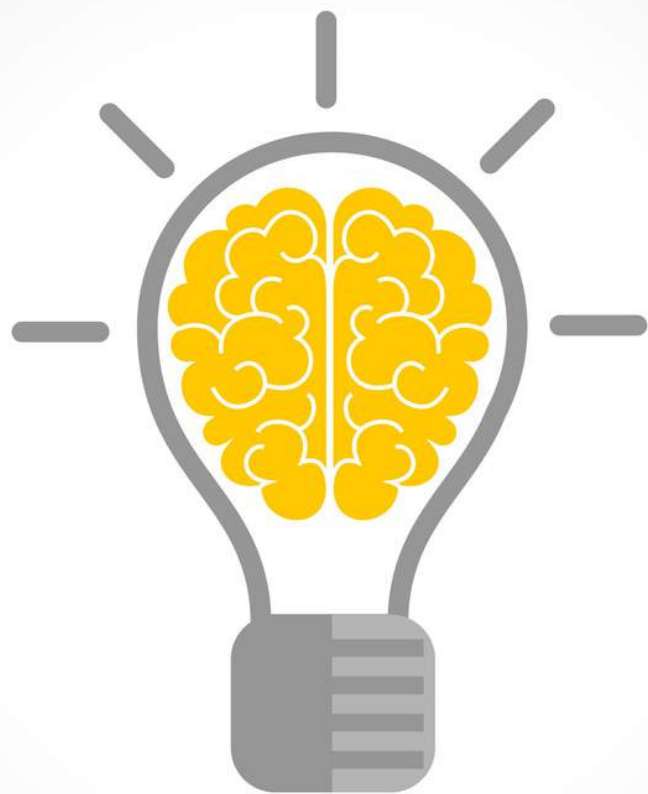
Certificate in Automotive Practices (Level 3)		NZQF Credits	
Unit Standard	Title	Level 2	Level 3
29579	Demonstrate knowledge of good work habits and safe work practices in the automotive industry	4	
3856	Identify emergency procedures in the motor and related industries		2
29580	Demonstrate good work habits and safe work practices in the automotive industry	4	
30478	Demonstrate knowledge of automotive lubricants	2	
30434	Service a vehicle or machine		3
30567	Demonstrate knowledge of automotive tyres and wheels		3
24458	Prepare to repair, and repair punctures in tubes and tubeless tyres on light vehicles		5
21722	Balance a wheel off a vehicle in the motor industry	2	
30568	Demonstrate knowledge of brake systems		4
30517	Service a brake system on a vehicle or machine		4
30518	Bleed a hydraulic brake system		2
30572	Demonstrate knowledge of vehicle or machine batteries	3	
30556	Service an automotive battery		3
5742	Protect electronics when servicing or repairing a vehicle or machine in the motor industry		2
		<b>15</b>	<b>28</b>
<b>Total credits</b>		<b>43</b>	

Contact Phil Hayes - [phayes@acford.co.nz](mailto:phayes@acford.co.nz)

Address - 162 Main South Road, Sockburn, Christchurch

---

# PSYCHOLOGY PROGRAMME





## PROGRAMME OUTLINE

1 day per week

This Level 3 Psychology course will help you to understand more about how people think, feel and behave.  
(University Entrance Achievement Standards)

Topics include: learning about analysing past studies, conducting research in psychology, and understanding different psychological approaches.

ACHIEVEMENT STANDARDS		NZQF Credits	
Unit Standard	Title	Level 2	Level 3
91872	Analyse the interaction between psychological approaches		6
91873	Analyse the significance of a key piece of research and its impact on society		3
91874	Conduct independent psychological research with consultation		3
Total credits		15	

Contact - [hello@visioncollege.co.nz](mailto:hello@visioncollege.co.nz)

Address – 20 Twigger Street, Addington, Christchurch

## NATIONAL TRADE ACADEMY BUS INFORMATION

### BUS INFORMATION

National Trade Academy will provide travel assistance to all Dual Enrolment students, paid in arrears. A Metro Card will be provided to all Dual Enrolment students, or we will top up a student's existing card. The card will be topped up weekly. Please note that the student will need to cover the first week of travel.

Special Metro bus service to NTA from the bus stop opposite the Antarctic Centre.

- All students should be at this bus stop by 8.20am
- The number 3 Metro bus (purple line) leaves the Antarctic Centre at 8:30am sharp  
(the number 3 starts in Sumner at 7.05am, picking up along the way)
- The bus will return students to the Antarctic Centre at 4:30pm
- There is only one bus extension travelling to NTA in the morning, and one returning in the afternoon.

To plan your bus journey: [www.go.metroinfo.co.nz](http://www.go.metroinfo.co.nz)

Where to? - search for - NTA or National Trade Academy  
(890 McLeans Island Road)

